



THE DAZCAT 14 ODCC

Open Deck Charter Cat

Designed by Dazcat

Built by Multimarine

Foss Quarry, Mill Road, Millbrook, Torpoint, Cornwall, PL10 1EN

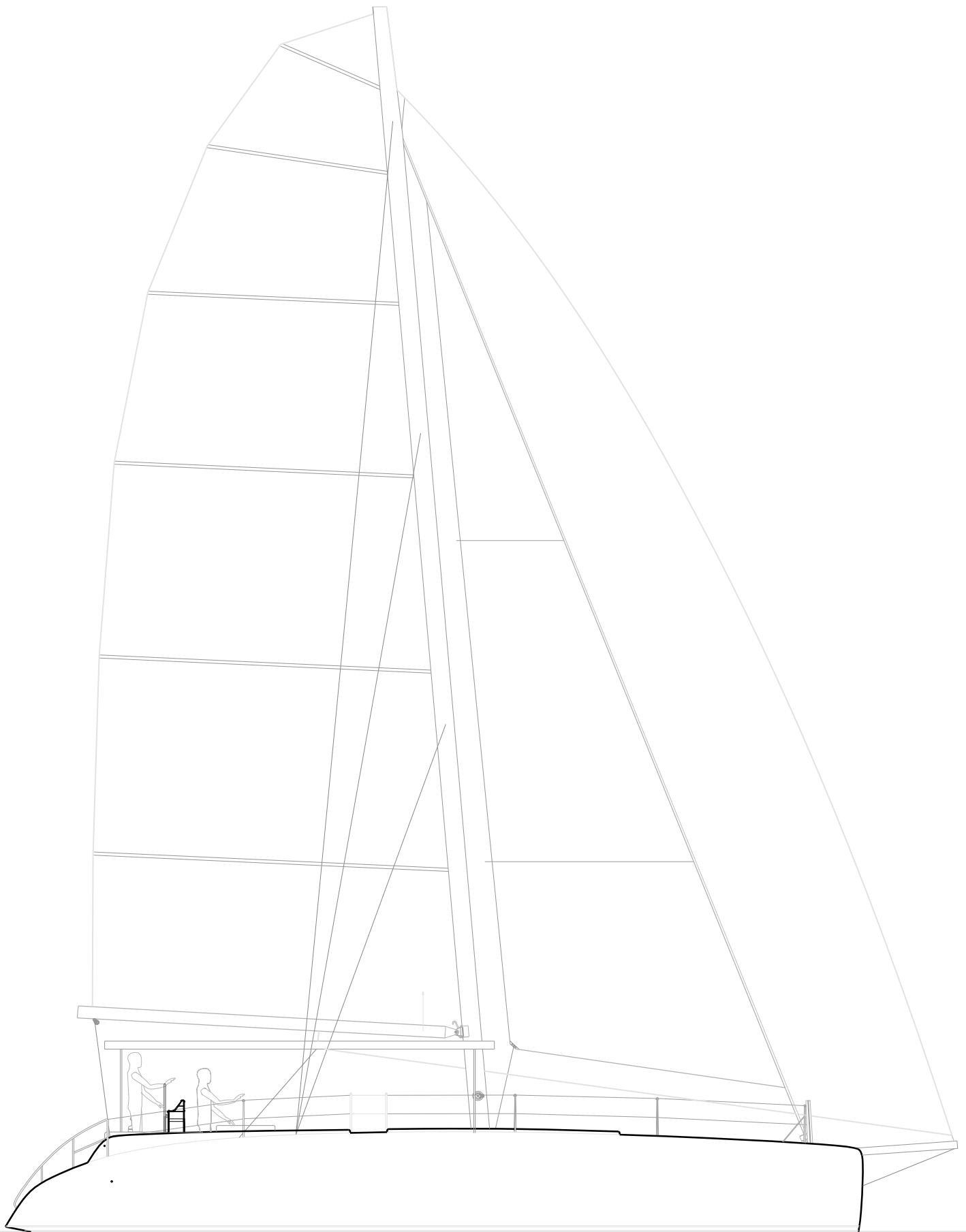
Te: +44 (0)1752 823513

Fax: +44 (0)1752 823179

info@multimarine.co.uk

www.multimarine.co.uk





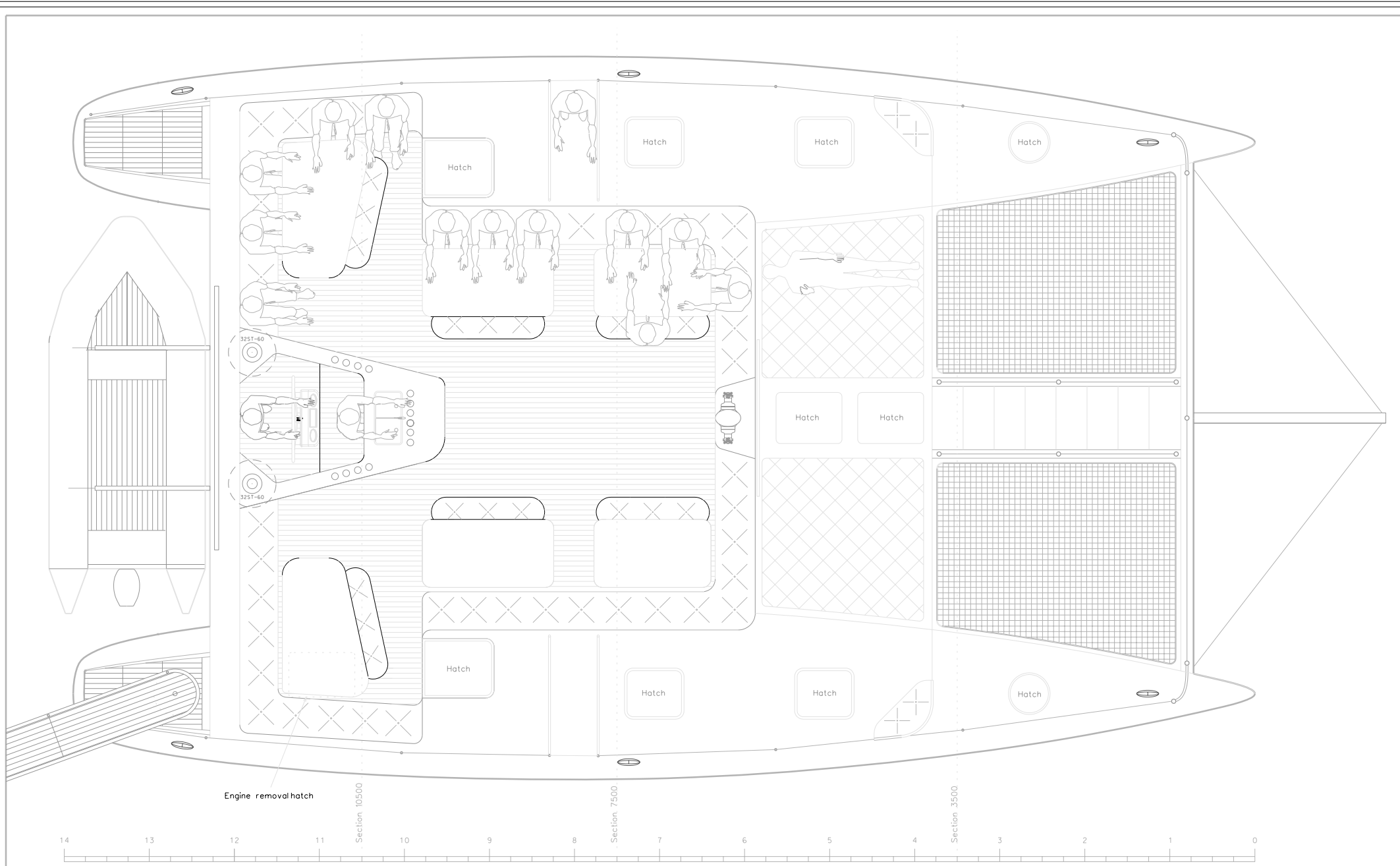
DAZCAT
Copyright 2003

FOSS QUARRY MILLBROOK TORPOINT
CORNWALL PL10 1EN TEL 01752 823129
www.multimarine.co.uk info@multimarine.co.uk

SCALE NTS
DWG NO
DRAWN DR

PROJECT DAZCAT 14M CATAMARAN
DATE 2/12/03
DRAWING GENERAL ARRANGEMENT - SAIL PLAN

LENGTH 14.00m
BEAM C/L 6.48m
BEAM OA 8.5m



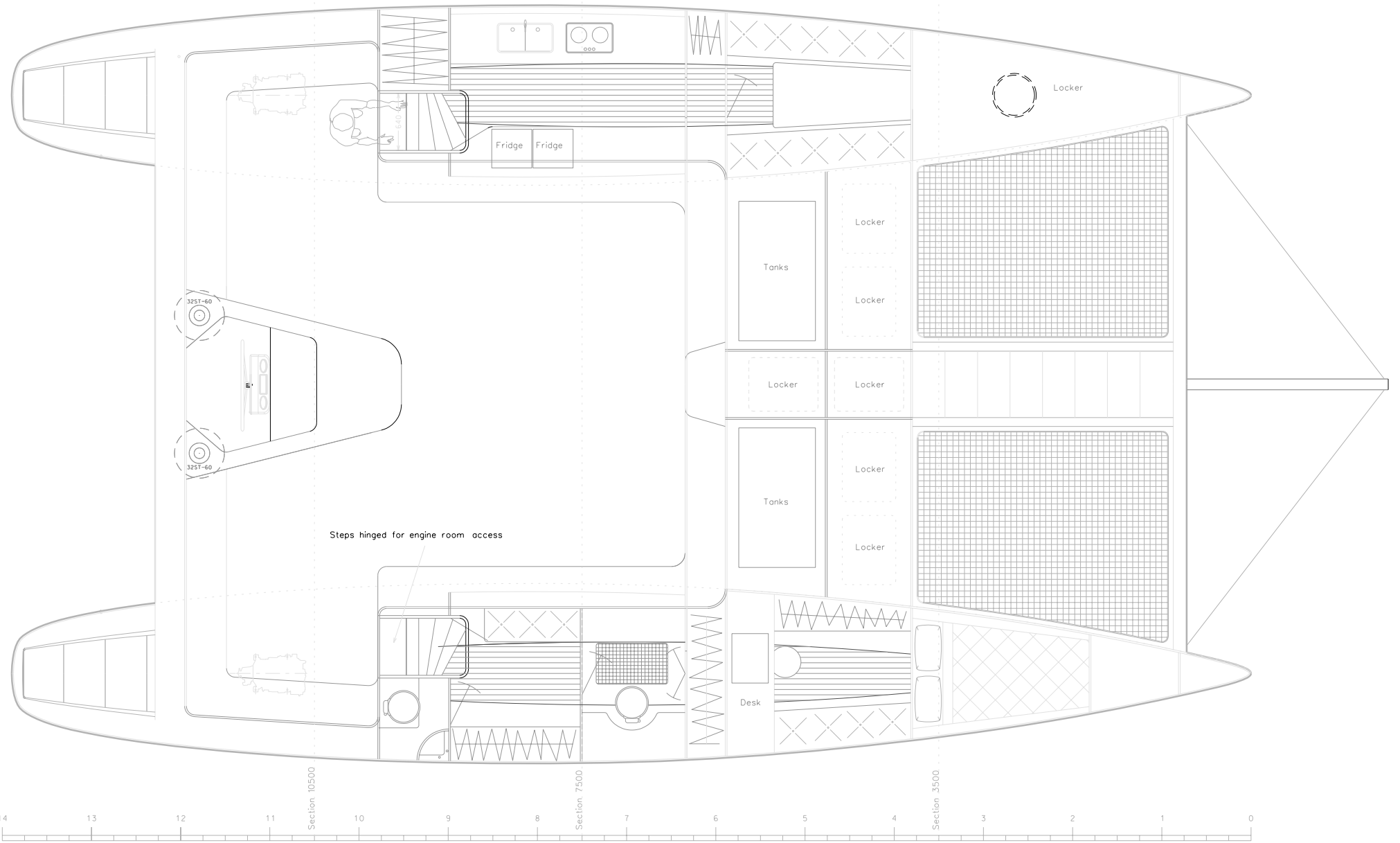
DAZCAT
COPYRIGHT 2003

FOSS QUARRY MILLBROOK TORPOINT
 CORNWALL PL10 1EN TEL 01752 823129
 www.multimarine.co.uk info@multimarine.co.uk

SCALE 1:50 @ A3
 DWG NO
 DRAWN DR

PROJECT DAZCAT 14M CATAMARAN
 DATE 2/12/03
 DRAWING DECK PLAN

LENGTH 14.00m
 BEAM C/L 6.48m
 BEAM OA 8.5m

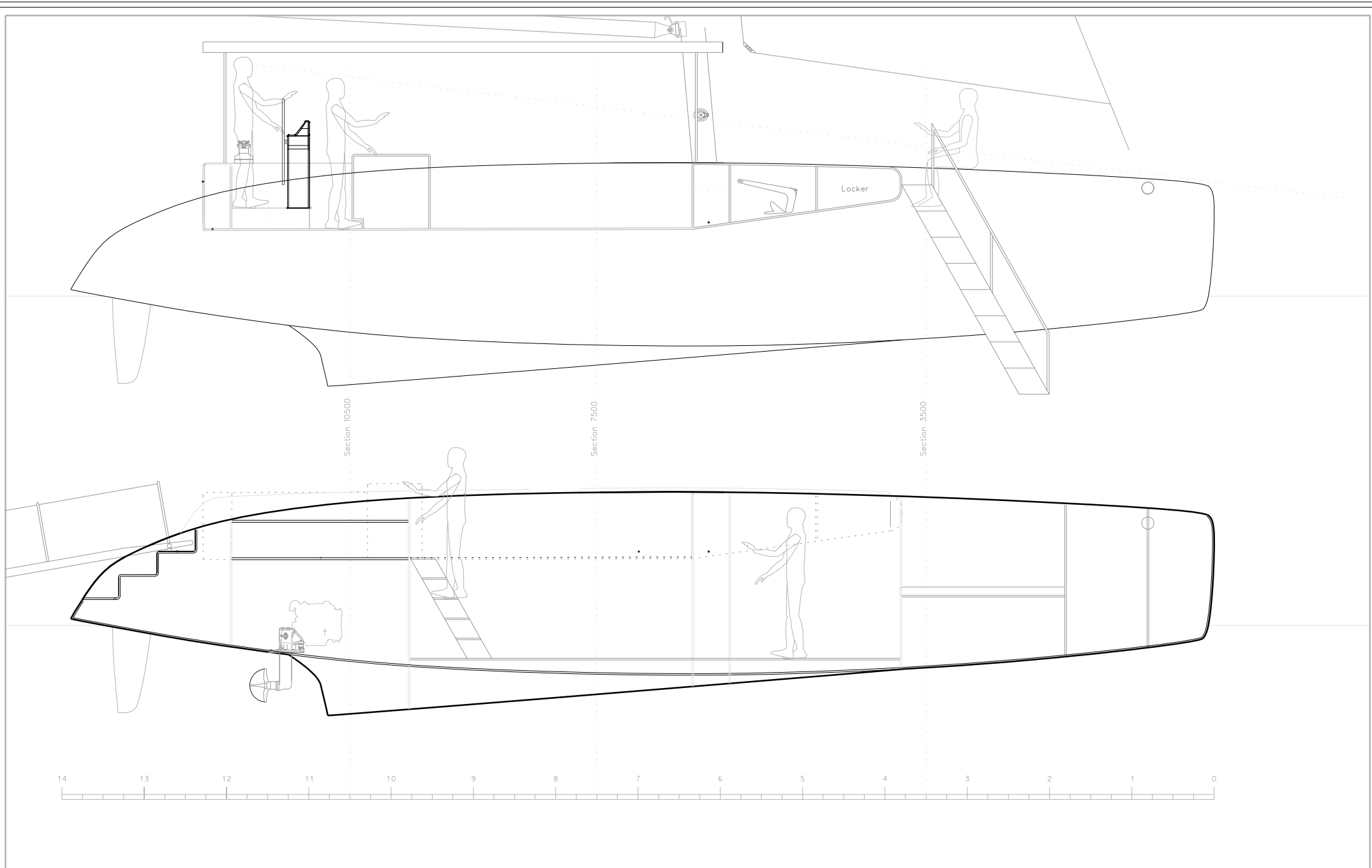


FOSS QUARRY MILLBROOK TORPOINT
 CORNWALL PL10 1EN TEL 01752 823129
 www.multimarine.co.uk info@multimarine.co.uk

SCALE 1:50 @ A3
 DWG NO
 DRAWN DR

PROJECT DAZCAT 14M CATAMARAN
 DATE 2/12/03
 DRAWING INTERIOR PLAN

LENGTH 14.00m
 BEAM C/L 6.48m
 BEAM OA 8.5m



DAZCAT
COPYRIGHT 2003

FOSS QUARRY, MILLBROOK, TORPOINT
CORNWALL, PL10 1EN TEL 01752 823129
www.multimarine.co.uk info@multimarine.co.uk

SCALE 1:50 @ A3
DWG NO
DRAWN DR

PROJECT DAZCAT 14M CATAMARAN
DATE 2/12/03
DRAWING PROFILE - HULL & CENTRELINE

LENGTH 14.00m
BEAM C/L 6.48m
BEAM OA 8.5m

DAZCAT ODCC14 MK 2 OPEN DECK CHARTER CAT

D14	Designed by Darren Newton Drafted by Derick Reynolds.
Classification:	Day Charter Catamaran RCD Category A.
Construction:	The ODCC14 MK2 is hand made using female moulded, vacuumed bagged, foam sandwich composite construction using multi-axial glass fabrics. The external surfaces are finished with 69PA gel coat. The hull interior hull lining are finished with easy cleaning flow coat. The plywood bulkheads are capped off with timber trims and varnished.
Deck Layout:	ODCC14 MK2 has a raised central helm position which gives the skipper all round vision. This gives total control of all systems including the engines and self stowing anchors, halyards and sheets. These are all close to hand allowing easy trimming of the self tacking jib and main. The cockpit features plenty of space and seating for up to 30 guests. There are sit round tables for dining alfresco. There is plenty of storage with lockers in the cockpit for client's kit, snorkel gear, ropes and warps with more lockers on the foredeck for fenders. The cockpit is completely covered with a sun awning to provide shelter, in harbour or under sail. This can also be enclosed with side awnings. On the foredeck there is a central walkway, which encapsulates the anchor well and retractable steps giving easy access to the water, dingy or beach. Access on and off the boat from the dock can either be from a rotating passerelle positioned aft or via removable steps positioned centrally.
Foils:	The ODCC14 MK2 can be beached on her keels which are protected by stainless steel rubbing strips.
Rig:	ODCC14 MK2 has an 18m aluminium mast, boom and spinnaker pole. Dyform and 1-19 wire rigging with Dyna One halyards for increased strength and durability.
Sails:	ODCC14 has a fully battened tri-radial cut spectra main and self-tacking jib. Down wind sails include a furling nylon reacher.
Auxiliary Engine:	The ODCC14 has twin 50hp Yanmar diesel inboard engines positioned aft in the hull with sail drives.

Accommodation: The ODCC14MK2 has access from fore and aft companion way hatches there is a guest changing room positioned centrally in the starboard hull this has plenty of locker space for hanging gear and a seat. There are two lavac toilets positioned at each end of the changing room the ladies feature a shower and vanity table with a large mirror.

Forward there's a crew / skippers cabin with plenty of storage for cloths a desk for totting up all the cash and a secure store to keep it in plus a double bunk with deck access hatch only

The port hull is accessed through the companion way hatch to the galley which has been designed for catering. It features twin sinks, fresh and salt water, mixer tap with hot and cold running water. Four-ring gas stove with options for an oven, microwave, there is also a very large three part top loading refrigerator unit and freezer. Aft is a saloon table and seating with plenty of storage underneath. Forward is saloon table that can convert into a double berth.

Availability: In either kit or complete boats. Private owner version available built to your final specifications.

Contacts: Multimarine Composites Ltd.
Foss Quarry
Mill Road
Millbrook
Torpoint
Cornwall
PL10 1EN

Telephone: +44 (0)1752 823513
Fax: +44 (0)1752 823179
Email: info@multimarine.co.uk
Web site: www.multimarine.co.uk